

2.5" IEEE-1394B & USB 2.0
External Storage Enclosure

User's Manual

Table of Contents

Introduction.....	3
Package List	3
Key Features	3
System Requirement	3
OS Support.....	4
USB2.0 Driver Installation Win 98/SE.....	5
Uninstallation USB2.0 driver.....	6
Driver Installation On MAC.....	8
Partitioning & Format.....	11
IEEE-1394b Driver Installation.....	15
Specifications.....	16

Introduction

Thank you for purchasing the 2.5" IEEE-1394B & USB 2.0 External Storage Enclosure. The 2.5" enclosure is compatible with the USB 1.1, USB 2.0, IEEE-1394a and IEEE-1394b Specification. The product provides high-speed serial data connection between IDE device and USB 2.0 or IEEE-1394b HOST.

Package List

The product package of the 2.5" IEEE-1394B & USB 2.0 External Storage Enclosure includes the following items:

- 2.5" IEEE-1394B & USB 2.0 External Storage Enclosure bridge board
- 2.5" HDD CASE
- One USB 2.0 extension cable
- One IEEE-1394b extension cable
- Driver installation CD
- Power cable
- This user's manual
- Power adaptor 5V/2.3A (option)

Key Features:

- Portable and security
- Quick and easy installation
- Compatible with Universal Serial Bus (USB) Specifications version 2.0
- Compatible with Universal Serial Bus (USB) Specifications version 1.1
- Compatible with IEEE-1394a
- Compatible with IEEE-1394b
- Plug and Play automatic detection and installation of peripherals
- Easy way to add more storage to your computer.
- Supports self-powered mode (+5V)
- Data Transfer Rate :USB 1.1 up to 12Mbps (1.5MB/s)
- Data Transfer Rate :USB 2.0 up to 480Mbps (60MB/s)
- Data Transfer Rate :IEEE-1394a up to 400Mbps (50MB/s)
- Data Transfer Rate :IEEE-1394b up to 800Mbps (100MB/s)
- Blue LED indicates Power-on status and red LED indicates access status.

System Requirement:

- PC or MAC computer with USB ,IEEE-1394 interface .
- Either the following operating systems:

	USB	IEEE-1394
Windows® 98/SE	<input type="radio"/>	<input type="radio"/>
Windows® ME	<input type="radio"/>	<input type="radio"/>
Windows® 2000	<input type="radio"/>	<input type="radio"/>
Windows® XP	<input type="radio"/>	<input type="radio"/>
MAC™ OS 8.6	<input type="radio"/>	<input type="radio"/>
MAC™ OS 9.X	<input type="radio"/>	<input type="radio"/>
MAC™ OS X 10.0	X	<input type="radio"/>
MAC™ OS X 10.1 or later	<input type="radio"/>	<input type="radio"/>

OS Support

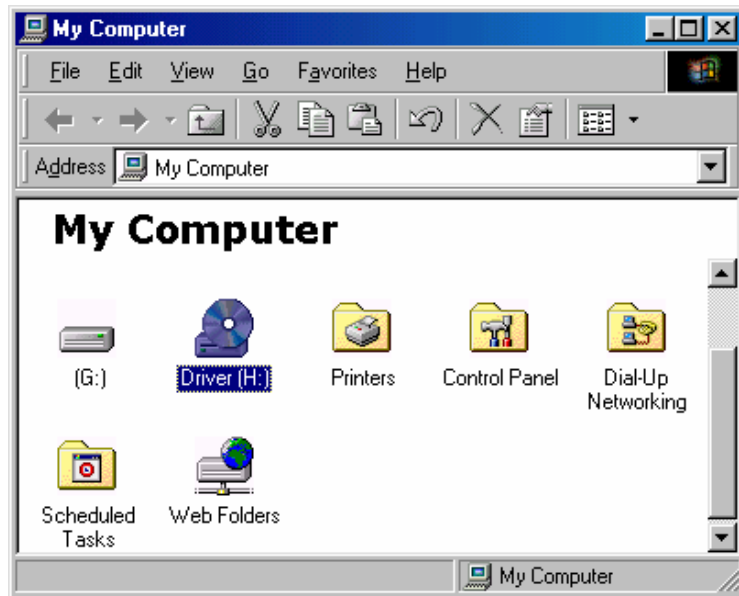
OS	USB Driver Needed	IEEE-1394 Driver Needed
Windows 98/SE	Y	N
Windows 2000	N	N
Windows ME	N	N
Windows XP	N	N
Mac OS 8.6	N	N
Mac OS 9.X	N	N
Mac OS 10.1.X	Y	N
Mac OS 10.2.X	Y	N

USB2.0 Driver Installation Win 98/SE

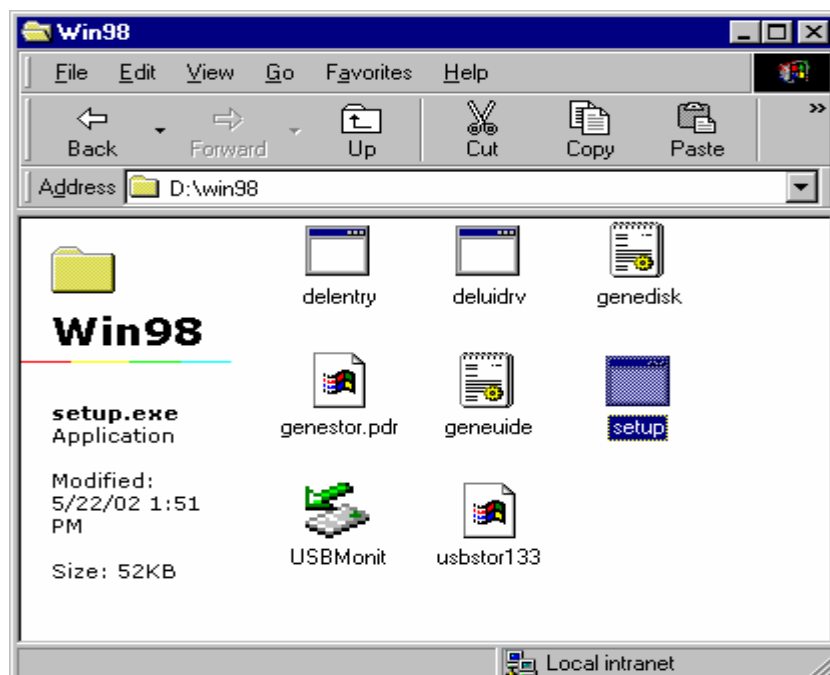
Before you start installing the driver, please don't plug your device into the USB port of your computer.

Follow the steps below to install the driver in Windows OS:

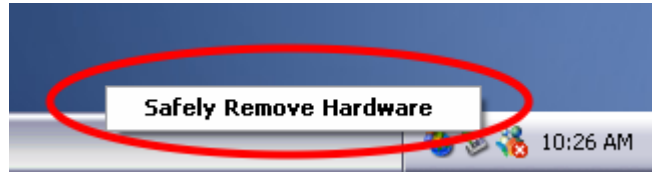
Step 1: Power on the computer where you will connect device and make sure that the USB port is enabled and working properly.



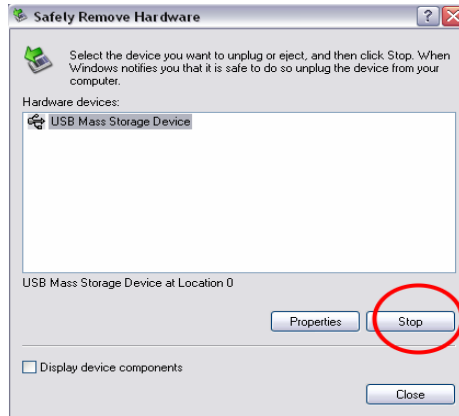
Step 2: Insert the driver CD into the CD-ROM drive and run the **Setup.exe** program inside the driver CD.



Step 2: Click on popup message



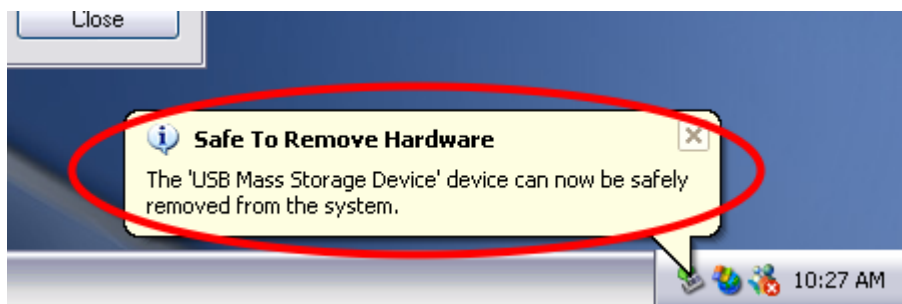
Step 3: Click "stop"



Step 4: Click "OK"



Step 5: You can safely removed from the system



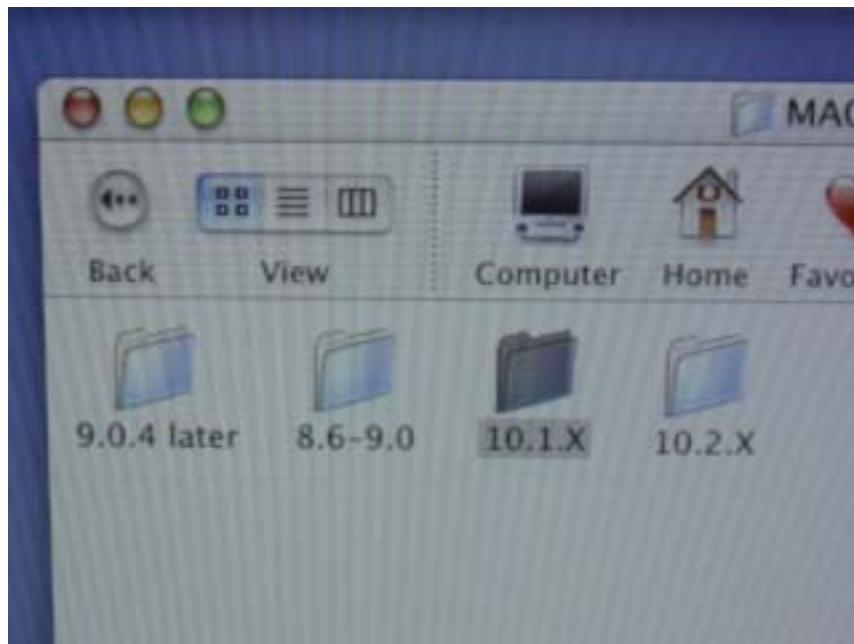
Driver Installation On MAC 10.1.X or 10.2.X

Before you start installing the driver, please don't plug your device into the USB port of your computer.

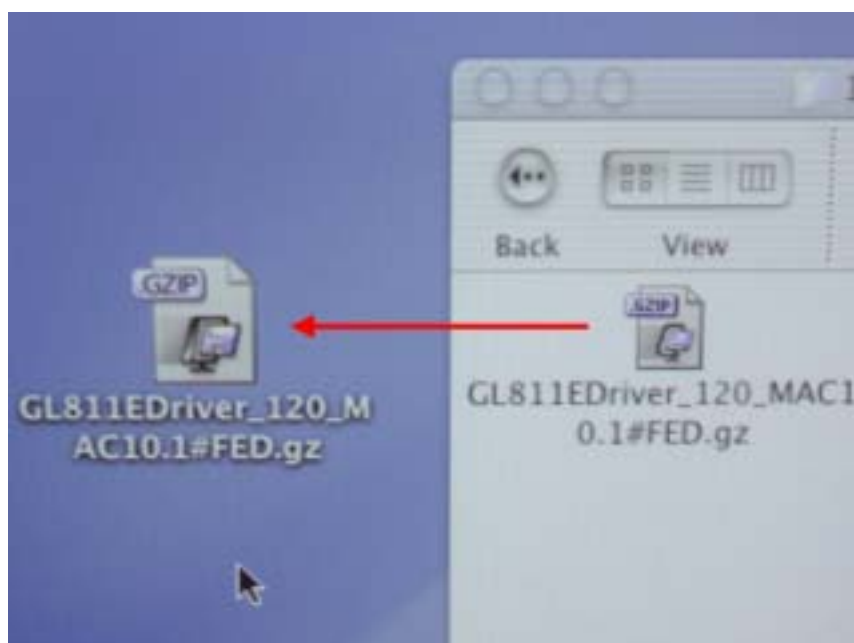
Follow the steps below to install the driver in MAC OS:

Step 1: Power on the computer where you will connect device and make sure that the USB port is enabled and working properly.

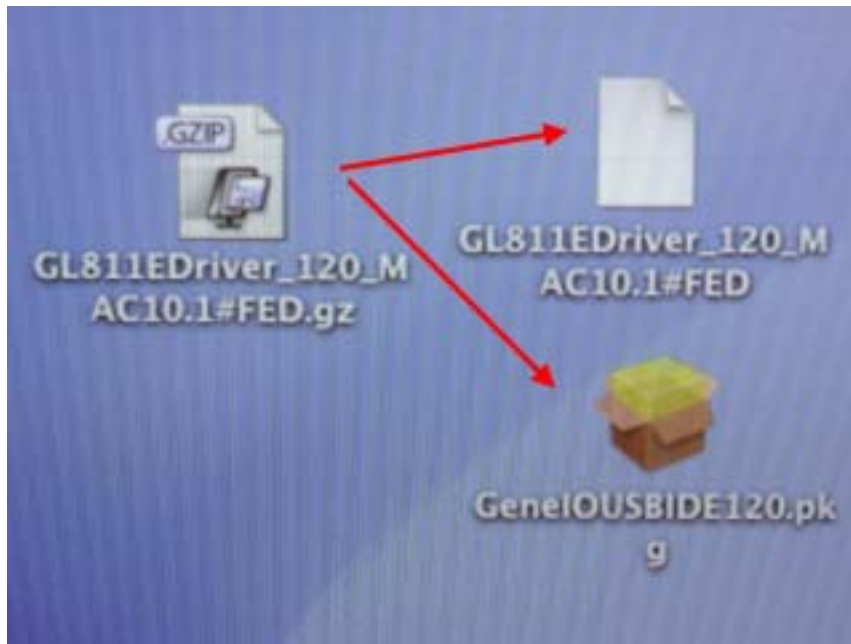
Step 2: Insert the driver CD into the CD-ROM and choose your OS.



Step 3: Copy the "GL811ED_xxx_MAC10.1#FED.gz" file to desktop



Step 4: Extract the "GL811ED_xxx_MAC10.1#FED.gz" file.
("GL811ED_xxx_MAC10.1#FED" and "GeneIOUSBIDExxx.pkg" file)

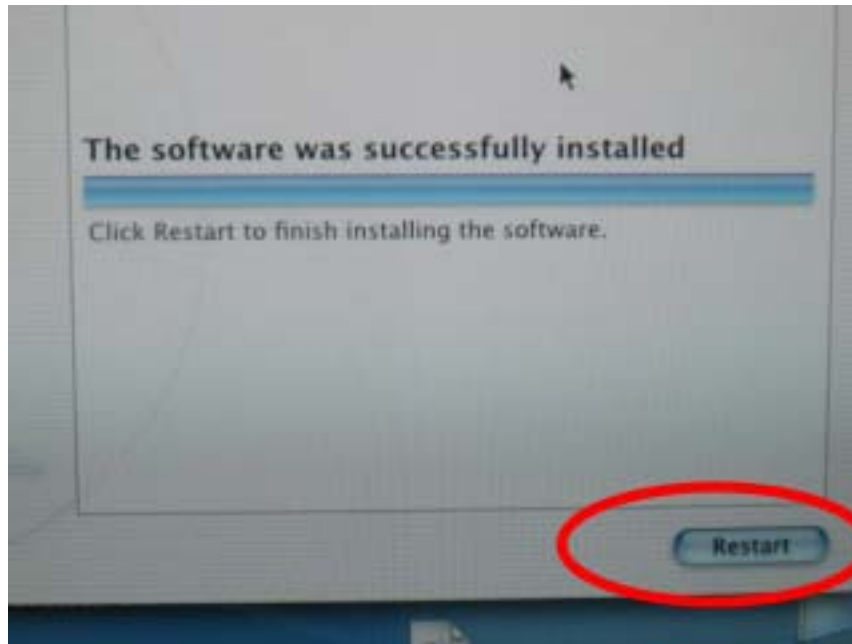


Step 5: Click the "GeneIOUSBIDExxx.pkg" to install

Step 6: Select a Destination



Step 7: Click Restart to finish installing the software.

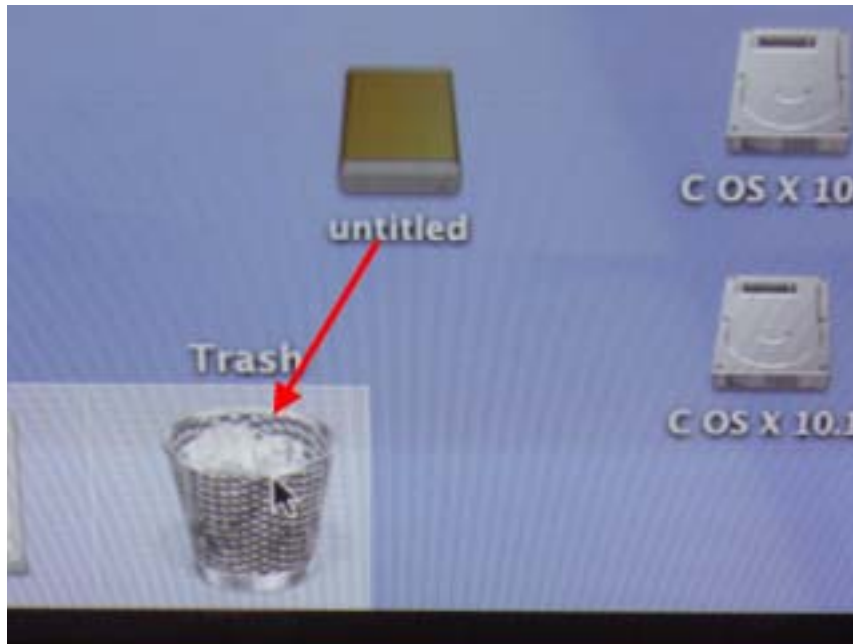


Step 8: Connect USB cable of your device into available USB port of your computer. The device is ready for use.



Remove Hardware

Drag the HDD icon to the Trash bin and remove the device



Partitioning & Format

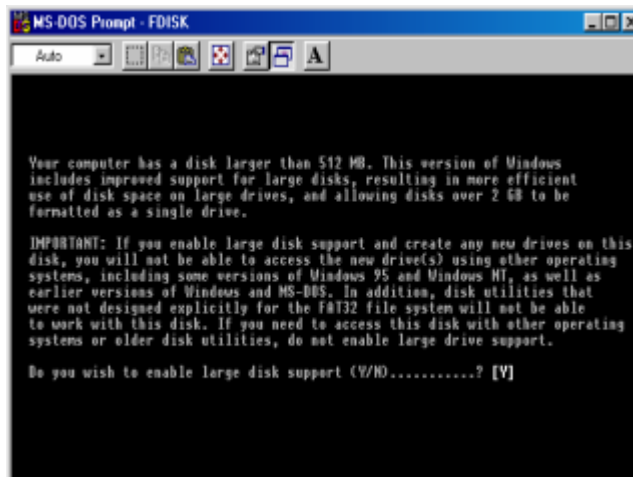
If you have a new HDD. This step usually only required in the first time you install the HDD .

Windows 98SE / ME

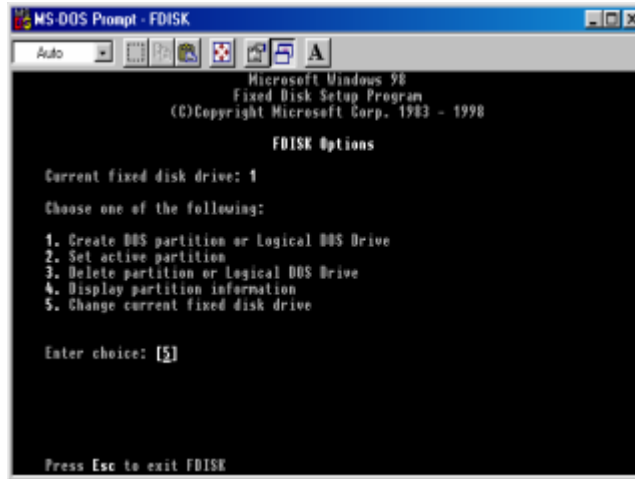
Step1. DOS command type “fdisk” and press Enter.



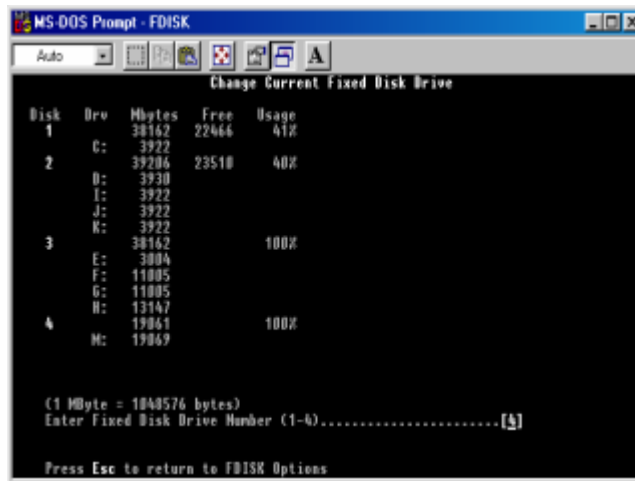
Step2. Select “Y”



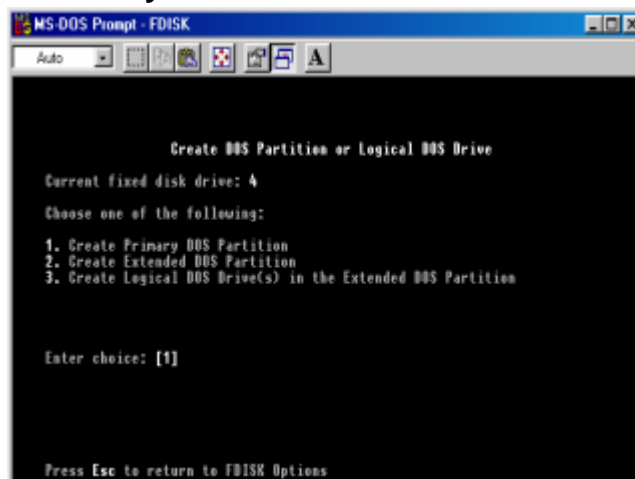
Step3.Enter “5” to change the disk



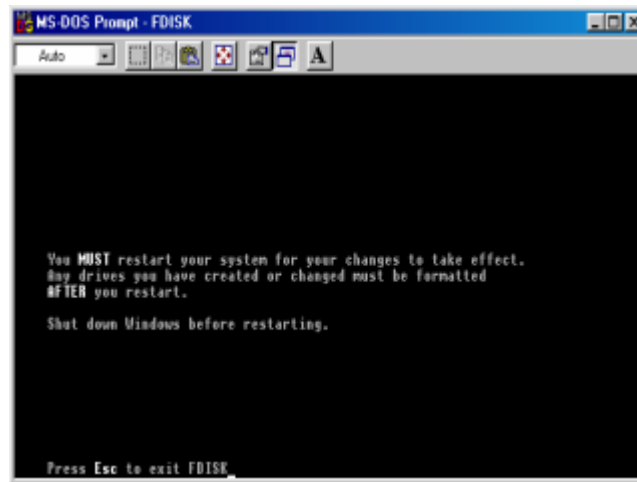
Step4.Select your disk to partitioning



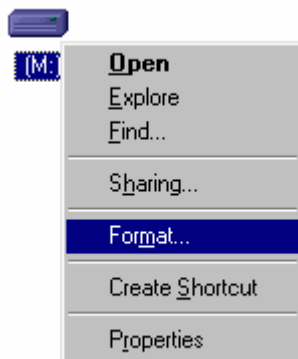
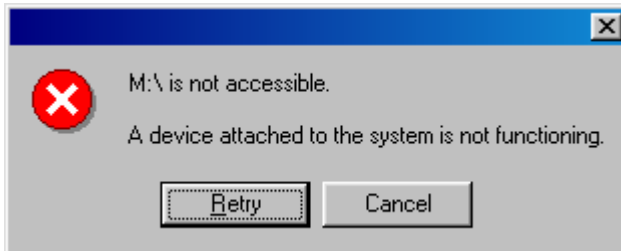
Step5.choose “1” Great Primary DOS Partition and follow the instructions



Step6.Fdisk finish,press :”Esc” to exit Fdisk and remove your HDD

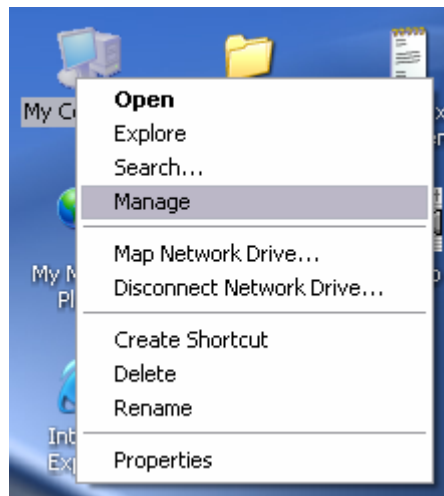


Step7.If it has the error,please format your HDD.



Windows 2000 / XP

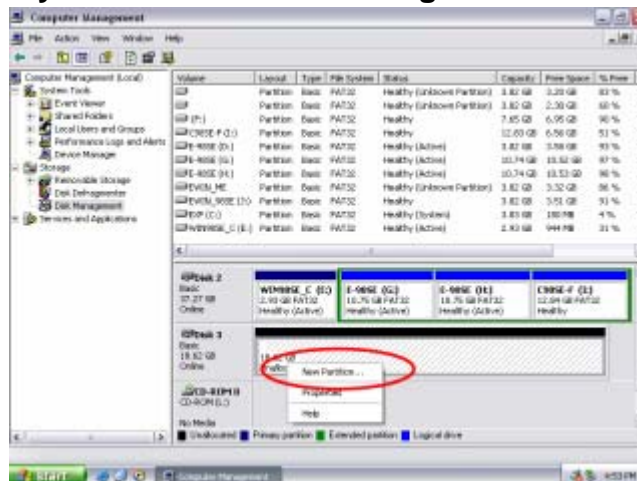
Step1. Right click “My Computer” and select “Manage”



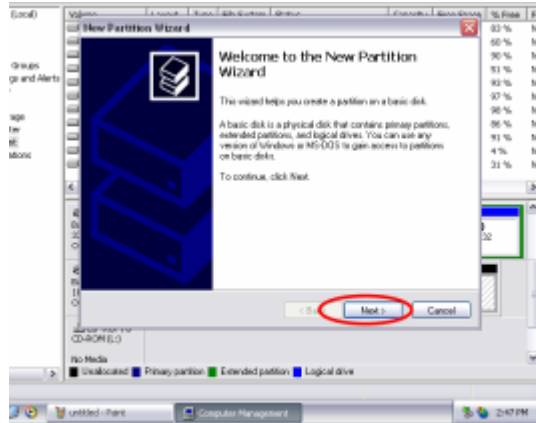
Step2. Select “Disk Management”



Step3. Choose the disk you want to format and right click on it for further commands.



Step4.Follow the Partition Wizard.

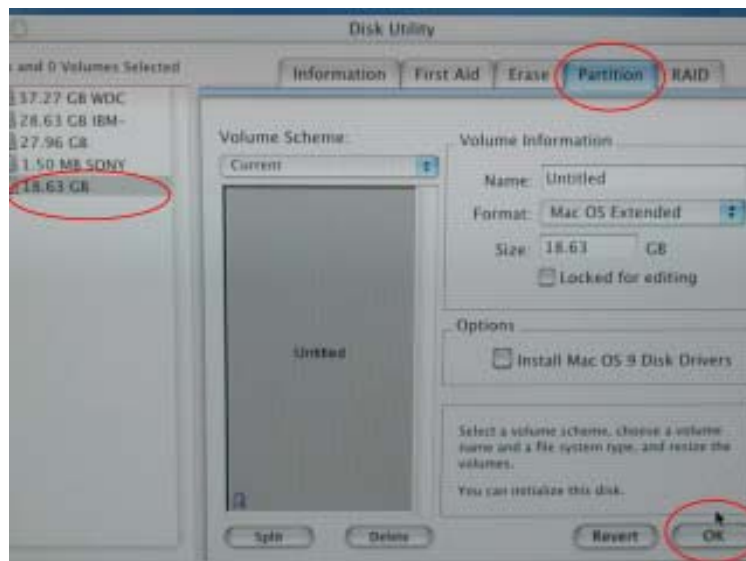


MAC 10.X

Step1.Select “Disk Utility” in the Utilities folder.



Step2.choose your HDD and format it.



IEEE-1394b Driver Installation

The IEEE-1394b isn't driver needed in all operating systems.

Remove IEEE-1394b device

The same as remove USB2.0 device

Specifications

Transfer Rate	<ul style="list-style-type: none">• USB 1.1 up to 12Mbps (1.5MB/s)• USB 2.0 up to 480Mbps (60MB/s)• IEEE-1394a up to 400Mbps (50MB/s)• IEEE-1394b up to 800Mbps (100MB/s)
Power supply	USB_bus power 5V IEEE-1394 MAX 35V
Operating Temperature	0°C ~60°C
Storage Temperature	-20°C~70°C
Humidity	0%~90% RH